

# CONSERVATION COMMENTARY

## Meigs Soil & Water Conservation District

Volume XVIII, Issue 2

www.meigsswcd.com

Winter 2018

### Birds and Herds Mix with NRCS

#### Deadline date Jan. 19

POMEROY – If you think livestock and quail don't mix, a new concept in managed grazing may just change your mind



USDA's Natural Resources Conservation Service (NRCS) is now accepting applications for a unique program that focuses on estab-

lishing productive warm-season forages to improve livestock production and provide large areas of prime habitat for ground nesting birds and other wildlife.

Ohio's Northern Bobwhite in Grasslands project is part of a national Working Lands for Wildlife (WLFW) partnership, a collaborative approach to conserving habitat for declining species on farms and working forests. NRCS works with partners and private landowners to focus voluntary conservation

efforts on working landscapes.

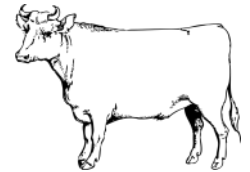
The Northern Bobwhite in Grasslands project is designed to help bring back the quail that were once an integral part of Ohio's farming way of life. Leading researchers have documented the wildlife benefits of managed grazing on native summer forages, concluding that this approach enhances the habitat for the ground nesting birds while improving livestock weight gains.

In Ohio, the Bobwhite Quail is currently a species of concern, meaning that it appears to be in decline or in need of conservation.

"Ohio's new project is a 'win-win' for producers by enabling them to continue grazing on land with installed conservation measures," said Terry Cosby, NRCS State Conservationist in Ohio. "By replacing fescue with native grasses, participants can improve or maintain average daily weight gains, enhance soil health, and hedge against

summer drought with fewer inputs."

NRCS utilizes the Environmental Quality Incentives Program (EQIP) to offer technical and financial assistance to eligible livestock producers to implement conservation practices to address habitat loss without taking their land out of production. NRCS will conduct targeted restoration activities with a focus on 30 southern and southwestern Ohio counties including Meigs County.



All NRCS financial assistance programs are offered in a continuous sign-up; however, to be considered for Northern Bobwhite in Grasslands funding, applications must be received by Jan. 19, 2018.

To learn more about technical and financial assistance available through NRCS conservation programs, visit your local USDA Service Center. In Meigs County contact Carrie Crislip, NRCS District Conservationist at 740-992-6646.

#### District Affiliate Member Process Changes

The Meigs SWCD Board of Supervisors approved a change to the District Affiliate Membership process to assure affiliate members are represented for a set amount of time.

Beginning in 2018 affiliate membership requests will be sent the first week of June. The year-long affiliate membership will begin August 1, 2018 and will expire July 31, 2019 regardless of when the membership donations are received by the district.

Affiliate memberships received by the district by the August 1 date will insure they are recognized and promoted at the county fair, the district annual banquet, other district events and in all district newsletters for a one year period. This will be the annual process in the years to follow.

Affiliate membership levels will not change:

Level 1 - \$100

Level 2 - \$50

Level 3 - \$25

Our intention with the changes listed above is to make the affiliate membership process more consistent and less confusing for our affiliates. Going forward, every affiliate member will know when their membership starts and when it ends. Thank you for your support Affiliate Members.

#### Reorganization Meeting Held

The reorganization meeting of the Meigs Soil and Water Conservation District took place on January 3, 2018. A new chairman was elected, Tony Carnahan. Mr. Carnahan has been on the board for 2 years. Carnahan's grandfather, Harold Carnahan, was the first chairman of the Meigs SWCD Board of Supervisors and served as a board member for a total of 26 years.

Bill Baer stays as Vice Chairman and Keith Bentz continues as Secretary/Treasurer.

Other supervisors include Tonja Hunter and previous chairman Joe Bolin.



**The mission of the Meigs Soil and Water Conservation District is to provide assistance for the wise use of our natural resources for present and future generations.**

## ORDER FORM

Tree	Trees per Packet	# Packets	\$/Packet	Total \$
Black Cherry	25		\$21.00	
Black Walnut	25		\$21.00	
Northern Red Oak	25		\$21.00	
Sugar Maple	25		\$21.00	
White Oak	25		\$21.00	
Bald Cypress	25		\$18.00	
Colorado Blue Spruce	25		\$18.00	
Eastern White Pine	25		\$18.00	
Norway Spruce	25		\$18.00	
Scotch Pine	25		\$18.00	
Hard Mast Packet	20		\$25.00	
Moist Soils Packet	20		\$20.00	
Pollinator Packet	10		\$15.00	
Gala/Red Rome Beauty Apple Trees	2		\$20.00	
Shiitake Mushrooms	1kit		\$25.00	
Wildlife Food Plot Seed Mix	25 lbs		\$40.00	
Erosion Control Seed Mix	2 lbs		\$15.00	
Wildflower and Grass Seed Mix	1 oz		\$6.00	
Ohio Pollinator Seed Mix	1.60 lbs PLS		\$84.00	
Ohio Pollinator (NO GRASSES) Seed Mix	1.36 lbs PLS		\$80.00	
Wild Ginger	25 per packet		\$25.00	
Partridge Berry	25 per packet		\$25.00	
Wild Columbine	25 per packet		\$25.00	
Bat House	each		\$18.00	
Eastern Bluebird Box	each		\$18.00	
Tree Marking Flags	each		\$.10	
Plantskydd-ready to use spray	1 quart		\$22.00	
Plantskydd-soluble powder	2.2 lbs		\$39.00	

<b>Total</b>
--------------

Name: _____
Address: _____
City/State/Zip: _____
Phone: _____ Email: _____

**Order deadline is  
February 21, 2018.  
Make checks payable to:  
Meigs SWCD**

### Coniferous Trees

**Bald Cypress** (*Taxodium distichum*) Large, slow-growing, deciduous conifer. Frequently reaches 100-120 ft. in height and 3-6 ft. in diameter.

**Colorado Blue Spruce** (*Picea pungens* var. *glauca*) This large evergreen with a moderate growth rate can reach heights of 100+ ft.

**Eastern White Pine** (*Pinus strobus*) An outstanding timber pine due to its large size (80+ ft. at maturity) and fast growing ability.

**Norway Spruce** (*Picea abies*) One of the fastest growing spruces! Reaches 100 ft. at maturity. Grows well on most sites.

**Scotch Pine** (*Pinus sylvestris*) Medium-size pine that can grow 50-80 ft. at maturity. Prefers well-drained, dry soils of lower fertility and full sun.

### Deciduous Trees

**Black Cherry** (*Prunus serotina*) Commercially important tree growing to 60+ ft. at maturity. Tolerates a wide variety of growing conditions.

**Black Walnut** (*Juglans nigra*) Mature height and spread is 70 ft. Prefers full to part sun.

**Northern Red Oak** (*Quercus rubra*) Tall, relatively fast growing tree that can reach 80+ ft. at maturity. Prefers full sun and acidic soil.

**Sugar Maple** (*Acer saccharum*) This large shade tree, which can reach heights over 100 ft. Prefers partial to full sun and well-drained soil.

**White Oak** (*Quercus alba*) A large, broadleaf tree growing to 100+ ft. at maturity. This species grows best in deep, sandy loam soil.

### Pollinator Packet (2 each of the following species - 10 seedlings total - No Substitutions)

**Eastern Redbud** (*Cercis canadensis*) It can reach mature heights of up to 30 ft. and spread of 10 ft.

**White Flowering Dogwood** (*Cornus florida*) Slow growing species with a mature height of 15 ft. and spread of 20 ft.

**American Plum** (*Prunus americana*) Can reach a mature height of 20 ft. and mature spread of 25 ft. and needs full sun.

**Persimmon** (*Diospyros virginiana*) It is a slow to medium growing tree reaching a mature height of 50 ft. and spread of 30 ft.

**Sourwood** (*Oxydendrum arboreum*) This small, native tree has a mature height of 25-30 ft. Prefers full sun and normal moisture.

### Hard Mast Packet (4 each of the following species - 20 seedlings total - No Substitutions)

**Northern Red Oak** (*Quercus rubra*) see above

**White Oak** (*Quercus alba*) see above

**American Chestnut** (*Castanea dentata*) Rapid growing trees that can reach 60-100 ft. at maturity. These seedlings are from the West Virginia State Nursery and are considered pure American Chestnut. This cultivar has shown a resistance to chestnut blight but it is too soon to claim resistance.

**Bur Oak** (*Quercus macrocarpa*) This massive, slow growing oak can reach mature heights of 90 ft. and mature spreads of 80 ft.

**Shagbark Hickory** (*Carya ovata*) This medium growing tree can reach mature heights of 100 ft. and mature spreads of 40 ft.

### Moist Soils Packet (4 each of the following species - 20 seedlings total - No Substitutions)

**Butternut** (*Juglans cinerea*) Mature tree height can be 40 to 60 ft. The slow growing butternut prefers full sun.

**Swamp White Oak** (*Quercus bicolor*) Reaching a mature spread and height of 60 ft., this slow to medium growing tree .

**Sycamore** (*Platanus occidentalis*) It easily reaches heights of 80 ft. and spreads of 60 ft. It prefers full deep, moist, rich, well-drained soils.

**Black Walnut** (*Juglans nigra*) see above

**Chinquapin Oak** (*Quercus muehlenbergii*) With a mature height of 60 ft. and spread of 80 ft., this slow to medium growing tree does best in rich, deep bottomlands.

### Groundcover This year only native groundcover options are offered!

**Wild Ginger** (*Asarum canadensis*) Spreads slowly by rhizomes. Height is 4-8 inches at maturity. Plant 8-12 inches apart. 25 bulbs per packet.

**Partridge Berry** (*Mitchella reptans*) Height is 2 inches at maturity. Plant 8-12 inches apart. 25 bulbs per packet. Tolerates heavy shade and dry conditions.

**Wild Columbine** (*Aquilegia canadensis*) With a mature height of 2-3 ft, this native wildflower freely self-seeds and will form large colonies in optimum growing conditions.

### Fruits and Mushrooms

**Gala/Red Rome Beauty Apple Trees** (2 trees - 1 of each species) Mature height and spread for this species is 35 ft. Plant these trees within 100 ft. of each other.

**Shiitake Mushroom** (1 kit) Kit contains 200 inoculated shiitake dowel plugs, 1/4lb. bees wax, wax dauber, 5 metal tags for labeling and an easy to follow growers guide.

### Seed Mixes

**Create Food Plots for Wildlife!** (25 lb. bag) An excellent choice for the landowner who wants to attract wildlife. Covers ½ acre.

**Erosion Control Seed Mix** (2 lb. bag) For severe erosion control measures. Covers 2000 sq. ft.

**Showy Northeast Native Wildflower & Grass Seed Mix** (1 oz. packet) Excellent for native meadows. Covers 200 sq. ft. .

**Ohio Pollinator Seed Mix** (1.60 lbs. PLS) - Little Bluestem, Sideoats Grama, Switchgrass, Black-eyed Susan, Brown-eyed Susan, Culver's Root, False Sunflower, Yellow Coneflower, Illinois Bundleflower, Lanceleaf Coreopsis, New England Aster, Partridge Pea, Purple Coneflower, Stiff Goldenrod, Wild Bergamot, Alsike Clover, Crimson Clover, Ladino Clover, Annual Lespedeza, Butterfly Milkweed, Common Milkweed, and Swamp Milkweed.

**Ohio Pollinator (NO GRASSES) Seed Mix** (1.36 lbs. PLS) - Black-eyed Susan, Brown-eyed Susan, Culver's Root, False Sunflower, Yellow Coneflower, Illinois Bundleflower, Lanceleaf Coreopsis, New England Aster, Partridge Pea, Purple Coneflower, Stiff Goldenrod, Wild Bergamot, Alsike Clover, Crimson Clover, Ladino Clover, Annual Lespedeza, Butterfly Milkweed, Common Milkweed, and Swamp Milkweed.

# Support our affiliate members!



**Peoples Bank**  
Pomeroy-Pomeroy Motor Bank  
740-992-2133  
[www.peoplesbancorp.com](http://www.peoplesbancorp.com)



**OHIO FARM BUREAU**  
231 Broadway Street  
Jackson OH 45640  
800-777-9226



**Farmers Bank**  
[www.fbsc.com](http://www.fbsc.com)  
Pomeroy 740-992-2136  
Tuppers Plains 740-667-3161  
Gallipolis 740-446-BANK (2265)  
Mason 304-773-6400  
Point Pleasant 304-674-8200



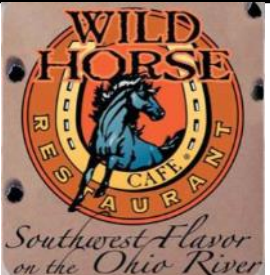
**Brown Brothers Agency Inc.**  
Nationwide Insurance  
514 E. Main St.  
Pomeroy, OH 45769  
Tel 740-992-2318  
Fax 740-992-2002  
brownd18@nationwide.com

**Millersport Agri Service**  
The Hoover Family  
10221 Lancaster-Newark Road  
Millersport OH 43046  
(740) 487-2424

DMI Tillage Equipment      Farm Fans and Dryers  
Sunflower Tillage Equipment      Westfield Augers  
Vicon Hay Making Equipment      Kongslide Grain Vacs  
Great Plains Drills and Sprayers  
Kinze Corn Planters  
Grain Systems Inc. Bins



**Main Street, Rutland, 740-742-7405**



**The Wild Horse Café**  
251 W Main Street  
Pomeroy OH 45769  
740-992-0099


**Birchfield Funeral Home**  
212 Main St.  
P.O. Box 188  
Rutland, OH 45775  
740-742-2333



**3R Industries Inc.**  
27938 Tower Rd.  
Langsville OH 45741  
740-669-4836



**Caudill Chipping Inc.**  
(740) 978-8157  
35788 State Route 324  
Hamden, OH 45634





**HOME NATIONAL BANK**  
RACINE & SYRACUSE  
[www.homenatlbk.com](http://www.homenatlbk.com)  
740-949-2210 Racine  
740-992-6333 Syracuse



**Meigs Council on Aging**  
122 East Memorial Drive  
P.O. Box 722  
Pomeroy, Ohio 45769  
740-922-2161  
[WWW.MEIGSCOA.COM](http://WWW.MEIGSCOA.COM)



**Racine Service Center**  
24 Hr. Towing  
Mike Hill - Owner  
Phone (740) 949-2700      104 5th St.  
Fax # (740) 949-2801      Racine, OH 45771



**The Mark Porter Family of Dealerships**  
Athens • Pomeroy • Jackson  
Mark Porter Chrysler Dodge Jeep Ram      Mark Porter Autoplex



**Kyger Creek Generating Station**  
Cheshire OH

**Carl's Auto Sales**



**SR 124, Middleport**  
**740-992-3198**



**AEP AMERICAN ELECTRIC POWER**  
**Mountaineer Plant**  
New Haven, WV

**Buckeye Rural Electric Cooperative, Inc.**  
4848 State Route 325 South  
P.O. Box 200  
Rio Grande, OH 45674



Your Touchstone Energy® Cooperative



**Montgomery Trailer Sales**  
Langsville

**Quality Print Shop**  
Middleport

**Rutland Department Store**  
Rutland

**Story Law Office**  
Pomeroy

**D.A. Boston Excavating**  
Reedsville

**King's Ace Hardware**  
Middleport

**Racine Optometric Clinic**  
Racine

**Baum's True Value Lumber**  
Chester

**United Plant Savers**  
Rutland

**Facemyer Lumber Company**  
Middleport

**Halliday, Atkins, Jewell Farm**  
Rutland

**The Vaughn Agency**  
Pomeroy

**Leading Creek Conservancy**  
Rutland

**Manning Roush Gravely  
Tractor Sales**  
Pomeroy

**Bill Quickel—Insurance Plus Agencies**

114 Court Street  
Pomeroy OH 45769  
740-992-6677

Agent Bill Quickel  
Across from the Courthouse  
insplus@insurance-plus.com  
www.insurance-plus.com



**Douglas D. Hunter MD**  
207 5th Street  
Racine OH 45771

740-949-2683



**PDK CONSTRUCTION**  
34070 CREW ROAD  
POMEROY OH 45769



740-992-6451

Fox's Pizza Den on the River  
Pomeroy

Michael Swiger—State Farm Insurance  
Middleport

The Appliance Man  
Long Bottom

Little, Sheets, Barr LLP  
Pomeroy

Vinton County National Bank  
McArthur

Ridenour's Gas Service  
Chester

**LIGHTSTONE**  
GENERATION

Lightstone Generation  
Gavin Power, LLC  
7397 North State Route 7  
Cheshire, OH 45620



## **SWCD equipment for sale, rent**

### **The following items are available for sale:**

Marking Flags — \$.10 each  
Topographical Maps — \$8 each  
Ohio Pond Management Handbooks — Free  
Digital Soil Survey CD—\$10 each  
'Leading from the Past—Stories of Leading Creek' Book—\$15  
SWCD Hats— \$10

### **The following equipment is available for rent (subject to scheduling and availability):**

John Deere No-Till Drill (10-foot)	\$90 min. plus \$9/acre over 10 acres
Tye No-Till Drill (7 foot)	\$80 min. plus \$8/acre over 10 acres
Brillion Seeder (8-foot)	\$80 min. plus \$8/acre over 10 acres
Lime Spreader	\$50 min. plus \$2/ton over 25 tons
Forester Tree Planter	\$50 per day
Planter Bars	Free with \$50 returnable deposit
Box Trap	Free with \$30 returnable deposit



70 HP tractor min.
45 HP tractor min.
40 HP tractor min.
60 HP tractor min.
25 HP tractor min.

**A \$100 delivery/  
pickup fee will be  
assessed for  
equipment rentals  
outside of the county.**

*All equipment rentals must be scheduled through the Meigs SWCD office at (740)992-4282 during regular business hours for delivery Monday through Friday between the hours of 8 a.m. and 4 p.m. The minimum fee will be assessed if equipment is delivered and not used. A \$10 charge per month will be added to all bills after 60 days.*



**Meigs SWCD**  
**113 E Memorial Drive**  
**Suite D**  
**Pomeroy OH 45769**

Return Service Requested

Bulk Rate  
 U.S. Postage Paid  
 Pomeroy OH 45769  
 Permit #101  
 Non-Profit

[www.meigsswcd.com](http://www.meigsswcd.com)

**Meigs Soil and Water Conservation District**  
**113 E Memorial Dr., Suite D**  
**Pomeroy OH 45769**  
*Est. 1943*  
**[www.meigsswcd.com](http://www.meigsswcd.com)**

**Board of Supervisors**  
 Tony Carnahan, Chairman  
 Bill Baer, Vice Chairman/Fiscal Agent  
 Keith Bentz, Secretary/Treasurer  
 Joe Bolin, Fiscal Agent  
 Tonja Hunter, Member

**District Staff**  
 Steve Jenkins, Program Administrator/Technician  
 Darla Staats, Administrative Assistant  
 Jim Freeman, Wildlife Specialist/Watershed Coordinator  
 Jenny Ridenour, Education Coordinator/District Technician  
 Cindy Diehl, Receptionist  
 Bill Foley, Pick It Up! Coordinator  
 Josh Miller, Pick It UP! Assistant  
 Josh Partlow, Pick It UP! Assistant

**NRCS**  
 Carrie Crislip, District Conservationist  
 Zach Williams, Soil Conservation Technician  
**County Commissioners**  
 Michael Bartrum  
 Tim Ihle  
 Randy Smith

*The Meigs Soil and Water Conservation District would like to sincerely thank its affiliate members, the Meigs County Board of Commissioners, and other county and township officials for a successful 2017, and most especially the volunteers and community members who comprise the Meigs SWCD Board of Supervisors for their selfless service.*

**USDA's nondiscrimination statement**

The U.S. Department of Agriculture (USDA) prohibits discrimination in all its programs and activities on the basis of race, color, national origin, sex, religion, age, disability, political beliefs, sexual orientation, and marital or family status. (Not all prohibited bases apply to all programs.) Persons with disabilities who require alternative means for communication of program information (Braille, large print, audiotape, etc.) should contact USDA's TARGET Center at (202) 720-2600 (voice and TDD). To file a complaint of discrimination, write USDA, Director, Office of Civil Rights, Room 326-W, Whitten Building, 1400 Independence Avenue, SW, Washington, D.C. 20250-9410 or call (202) 720-5964 (voice and TDD). USDA is an equal opportunity provider and employer.

**Meigs SWCD Calendar of Events**

Regular meetings of the Meigs SWCD Board of Supervisors are generally held at 11:30 a.m. the fourth Thursday of each month at the SWCD office, 113 E Memorial Drive, Suite D, Pomeroy. Dates and times are subject to change.  
 Jan 15 — Office Closed-Holiday  
 Feb 19 — Office Closed-Holiday  
 Feb 22 — Regular Board Meeting  
 March 22 — Regular Board Meeting

Keep up with what's new at the Meigs SWCD! Like us on Facebook at "Meigs SCWD Conservation Area" and "Meigs Soil and Water Conservation District" or visit us at [www.meigsswcd.com](http://www.meigsswcd.com)

**Tree Sale Order Information Inside**  
**Orders Due February 21, 2018**

**Conservation Commentary is a publication of the Meigs Soil and Water Conservation District.**

**To subscribe or unsubscribe from Conservation Commentary, contact the Meigs Soil and Water Conservation District at 740-992-4282.**